



# MTe hot NTEP

Multijet meter



## Your benefits

- Utility grade and sustainable technology (robust & high grade wear resistant materials with brass body):  
**Excellent measuring stability and reliability over meter lifetime and awareness of using a recyclable product**
- NFC Tap and go  
**Simple commissioning process**
- Plug & Play:  
**Easy and fast on-site installation with automatic radio activation (no programming required)**
- Performance driven design:  
**Range up to 10 miles (line of sight)**
- Integrated monitoring of connectivity and reconnecting mechanism:  
**Robust operation with automatic repair options, e.g. due to gateway failures**

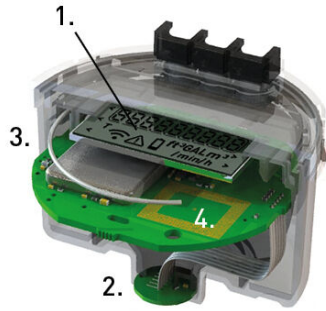
## Applications

- Multi-Family residential and Retail/Commercial applications for consumption monitoring of water and identification of critical events

## Properties

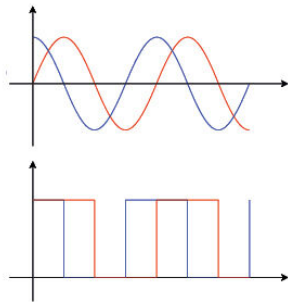
- Multijet dry-dial meter with magnetic coupling
- Inlet strainer
- Horizontal installation
- Sealed register for tamper resistance
- Typical battery lifetime up to 15 years
- 18 monthly volume key date values
- NTEP Approval CC 21-096A1
- UL2043 plenum rating for products installed in air-handling spaces
- NSF/ANSI 61-G & 372 certified and marked
- Meets AWWA C708 accuracy standards in horizontal position
- LoRaWAN transmission in license free 915 MHz frequency band
- Data security via AES-128-bit end-to-end encryption over 2 independent security layers
- ADR (adaptive data rate) support gives higher transmission intervals with consistent battery life

# Electronic Register - Hybrid - Technology



- (1) LCD
- (2) Sensors
- (3) Communication antenna
- (4) NFC interface

## Signal Processing:



- The ERH register is designed to detect the rotations of either two or four-pole magnets. Its electronic filter protects it from external magnetic disturbances, while two sensors filter and digitally convert the magnetic field.
- A highly efficient microcontroller is responsible for determining the rate and direction of flow while also having the capability to detect a range of events and alarms, such as backflow. Furthermore, the LCD display allows for maximum flexibility when viewing the measurement data.
- Lastly, the ERH register is fitted with an energy-saving, access-protected NFC interface for parameterization and activation, as well as a wireless communication transceiver for LoRaWAN 915 MHz.

# Technical Data

Nominal pipe size		1"	1½"
<b>Max. operating pressure</b>	<b>psi</b>	<b>230</b>	<b>230</b>
Connection thread on meter (NPSM)	Inch	1¼	2
<b>Max. continuous flow rate</b>	<b>gpm</b>	<b>44</b>	<b>70</b>
Max. flow rate	gpm	55	88
Min. flow rate (± 3 %)	gpm	0.75	1.5
Max. operating temperature	°F	194	194

Dimensions and weights				
<b>Length without couplings</b>	<b>A</b>	<b>Inch</b>	<b>10.24</b>	<b>11.81</b>
Height	B	Inch	5.31	6.30
Height from pipe centre line	C	Inch	3.58	4.49
Installation depth from pipe centre line	W	Inch	2.24	2.68
Weight without couplings		lbs	5.62	11.51

Ambient conditions	
Ambient temperature	+ 41 °F to + 131 °F
Transport & Storage temperature	-4 °F to + 158 °F
Register protection class	IP67

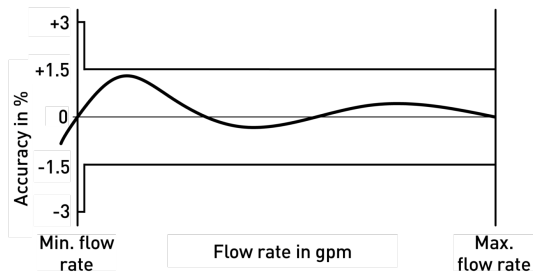
Power supply	
Lithium/Mangan battery (not replaceable)	3 V DC
Typical battery lifetime (depending on environment and configuration conditions)	Up to 15 years

Approval	
MTW3e	
NTEP hot No. CC 21-096A1	■
New York Certificate No. 10767	■
FCC ID: 2A4F7-ERH	■

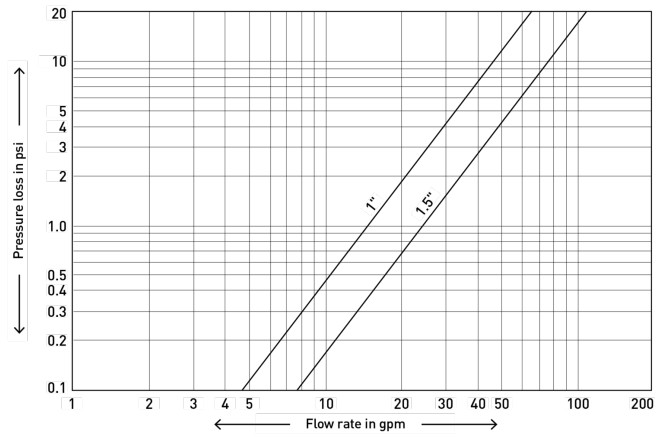
Certifications	
MTW3e	
NSF/ANSI 61-G & 372 D.Hot / incl. cold	■
LoRa Alliance Certification (1.0.4 spec.)	■



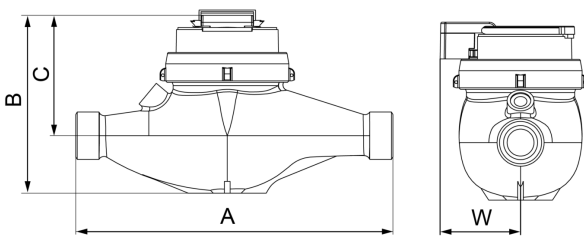
## Accuracy chart




## Pressure loss chart

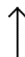


## Dimension Diagram



## Installation

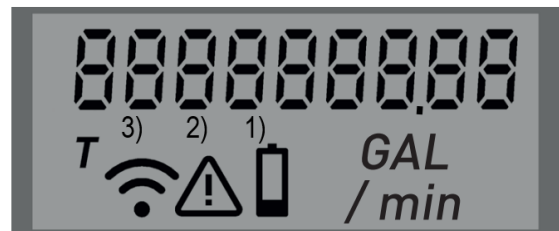
**Pipeline:** horizontal 

**Meter head:** facing up 

## Technical Information

Display	
LCD	9 digits
Volume unit	GAL or ft <sup>3</sup>
Volume resolution	1": 0.01 GAL or 0.001 ft <sup>3</sup> 1.5": 0.1 GAL or 0.01 ft <sup>3</sup>
Flow rate unit	GAL/min or ft <sup>3</sup> /h
Test mode	T
Low battery Icon	see image 1)
Alarm Icon	see image 2)
Radio indicator (On/Off) and LoRaWAN connectivity status	see image 3)

### GAL



LoRaWAN specifications	
Regional parameters (Frequency band)	US902-928 MHz ISM Band (902 - 928 MHz)
Transfer protocol (payload)	GWF specific
Radiated power	max. 20 dBm (100 mW)
Class	A
ADR (Adaptive data rate)	Yes
Activation type	OTAA

Information data package	
DevEUI	70B3D538700000AB
Meter manufacturer	GWF
Medium	Warm water
Meter S/N	23132356
Absolute meter reading (down to 15 min values)	359.76 GAL
Remaining battery life	Years
Alarms	Meter alarms, Low Battery, Burst pipe, Potential leak, Backflow, No Usage, Max. flow rate exceeded, Min./Max. temperature