



Meistream with GWFcoder MP

Woltmanmeter



Your benefits

- Revolutionary Multiprotocol interface:
Investment security due to the interoperability of the meter
- Transfer of the effective meter reading:
No data loss and guaranteed security of the billing data
- No programming required when commissioning the meter in a readout system (Plug & Play):
Easy and fast on-site installation
- Measurement of low flow rates:
Increased cost effectiveness
- Removable measuring insert:
Retrofittability and replaceability guaranteed
- One measuring insert for various bodies:
Lower storage costs

Applications

- Measurement of high flow rates, e.g.
 - Downstream of pumps or at transfer points
 - Reservoir inflows and outflows
- Measurement of low flow rates during offpeak periods
- Automated mobile or fixed network readout of relevant billing data
- Wired or radio remote readout of hard to access metering installations, e.g. meter pits, reservoirs
- Measuring of
 - Desalinated / demineralized water
 - Caustic soda up to 20%
 - Saline water up to 10%
 - Chlorinated water up to 1%
 - Glycol-water solutions up to 30%
 - Caustic solutions up to pH value 9

Properties

- Universal installation position
- No straight flow section required before the meter
- Register can be turned through 355°
- Maximum operating pressure PN 16 bar
- Temperature up to 50 °C
- Rotor is hydrodynamically, radially, and axially balanced
- Available in the standard installation lengths for WS and WP meters
- Powder coating provides optimum corrosion protection
- Non-ferrous metal design up to PN 16 bar
- SVGW certification
- **CE** Conformity according to the European Measuring Instrument Directive (MID)
- Flood-proof register (IP68) with Multiprotocol interface (MP), 5 m cable and provision for a HRI pulser
- M-Bus standard unit load: 2 unit loads (3 mA)

Options

- High-pressure series up to PN 40 bar
- High-resolution pulse generator HRI
 - ☐ [Documentation: HRI - EPe10213](#)
- Radio module RCM® split
 - ☐ [Documentation: RCM® - EPe40232](#)
- Radio module RCM®-LRW
 - ☐ [Documentation: RCM®-LRW... - EPe40261](#)

Technical Data

			40	50	50	65	65	80	80	100	100	125	150	150	200	250	300
Nominal diameter	DN	mm	40	50	50	65	65	80	80	100	100	125	150	150	200	250	300
Nominal pressure ¹⁾	PN	bar	16	16	16	16	16	16	16	16	16	16	16	16	16	16	16
Nominal flow rate	Q ₃	m ³ /h	40	50	50	70	70	120	120	230	230	250	450	450	800	1250	1400
Overload flow rate (few minutes)	Q ₄	m ³ /h	60	90	90	120	120	200	200	300	300	350	600	600	1200	1600	2000
Transitional flow rate ±2%	Q ₂	m ³ /h	0,32	0,4	0,4	0,63	0,63	0,51	0,51	0,81	0,81	1,02	1,6	1,6	4,03	6,3	16
Minimum flow rate ±5%	Q ₁	m ³ /h	0,2	0,15	0,15	0,2	0,2	0,2	0,2	0,3	0,3	0,5	0,8	0,8	2	3,5	9
Temperature		max. °C	50	50	50	50	50	50	50	50	50	50	50	50	50	50	50

Dimensions and weights			220	200	270 ²⁾	200	300	225 ³⁾	300	250	360	250	300	500	350	450	500
Overall length	L	mm	220	200	270 ²⁾	200	300	225 ³⁾	300	250	360	250	300	500	350	450	500
Height	H	mm	157	157	157	157	157	187	187	187	187	197	214	214	251	275	301
Height	h	mm	69	73	73	85	85	95	95	105	105	118	135	135	162	194	226
Dismantling height of measuring unit	g	mm	237	237	237	237	237	307	307	307	307	317	393	393	486	511	536
Meter weight		app. kg	7,5	7,8	9,6	10,1	12	14,2	16,3	18,2	20,2	20,7	35,9	35,9	56,9	79,4	103,8
Measuring unit weight		app. kg	1,5	1,5	1,5	1,5	1,5	3,2	3,2	3,2	3,2	3,2	5,9	5,9	9,6	9,6	9,6
Body weight		app. kg	6,0	6,3	8,1	8,6	10,5	11	13,1	15,0	17,0	17,5	30	30	47,3	69,8	94,2

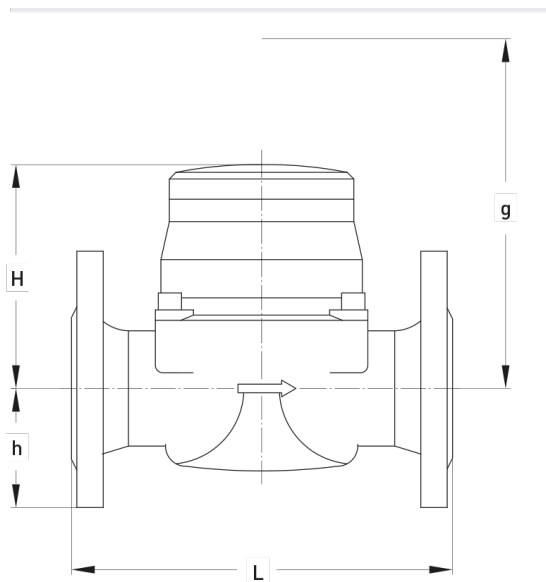
¹⁾High-pressure series PN 40 upon request

²⁾Also available with 300 mm body length

³⁾Also available with 200 mm body length

MID certification data			25	40	40	63	63	100	100	160	160	160	400	400	630	630	1000
Nominal flow rate	Q ₃	m ³ /h	25	40	40	63	63	100	100	160	160	160	400	400	630	630	1000
Temperature		max. °C	50	50	50	50	50	50	50	50	50	50	50	50	50	50	50
Horizontal measuring range			R125	R160	R160	R160	R160	R315	R315	R315	R315	R250	R400	R400	R250	R125	R63
Vertical measuring range			R63	R100	R100	R100	R100	R125	R125	R160	R160	R125	R200	R200	R250	R100	R63
Standard marking			R63	R100	R100	R100	R100	R100	R100	R100	R100	R100	R100	R100	R100	R100	R63

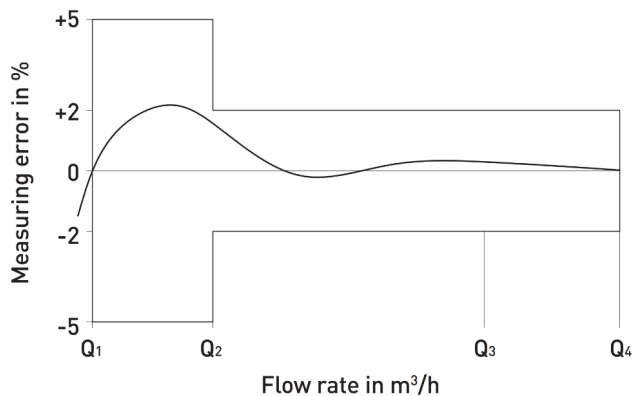
Dimension Diagram



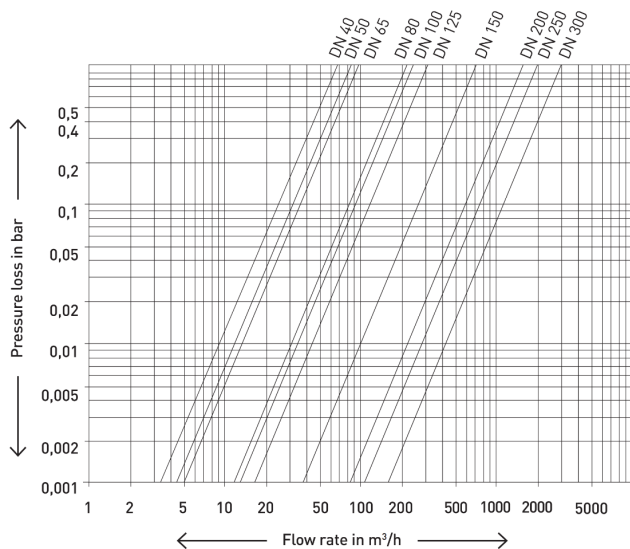
Materials

Body	Cast iron
Measuring unit	Plastic
Rotor	Plastic
Other materials	Brass / non-rusting steel

Measurement error curve



Typical Head Loss Curve



Installation

Pipeline:	horizontal	—
	vertical	
	diagonal	/
Meter head:	upwards	↑
	sideways	↔

Commission

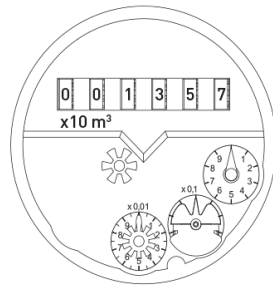
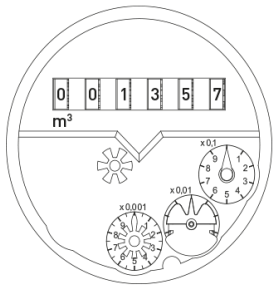


When commissioning the meter the measuring section must be filled slowly (bleed slowly).

Dial

DN 50 – DN 125

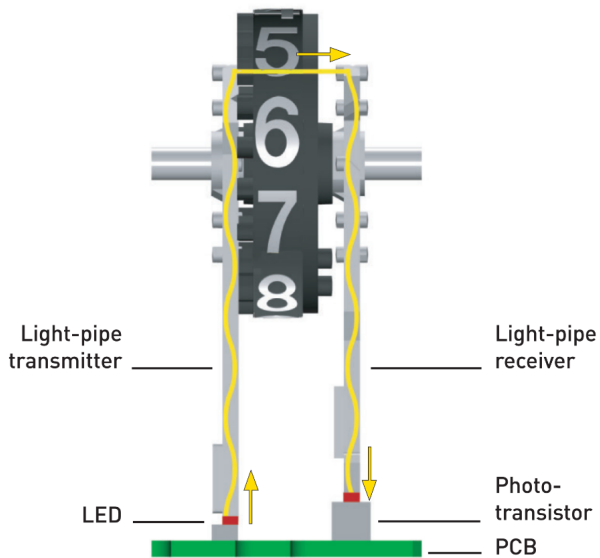
DN 150 – DN 300



Nominal size	DN	40–125	150–300
Smallest reading	m ³	0,0005	0,005
Maximum register reading	m ³	1'000'000	10'000'000

Pulse values HRI Pulser

Meter sizes	DN 40...125 1 Pulse = ...Liter	DN 150...300 1 Pulse = ...Liter
Meistream	100 1000	1000 10000



GWFcoder®-Technology

In the GWFcoder® system, the individual rollers of the mechanical register are read out optoelectronically. The position of the various long asymmetrically arranged slits in the roller counters is scanned using 5 light barriers (lightpipe transmitter and receiver). The light barriers are implemented with phototransistors, LEDs, and light conductors, which are all consecutively scanned and evaluated. The precisely defined position of each individual roller counter is encoded as an absolute roller counter reading and read out as a part of the protocol via the GWFcoder® interface. This functioning principle is patented by GWF. The GWFcoder® interface, compared to a meter with a pulse output, has an incomparably higher level of information content and readout accuracy. A GWFcoder® register does not require a battery, which, in turn, does not compromise existing revision cycles. The readout device supplies the power for the readout.

Moreover, all products with multiprotocol functionality provide the flexibility to switch between wall readout (inductive or CL), Wired M-Bus or radio readout which leads to an easy and fast «Plug & Play» installation on site.

SCR: IEC 62056-21 Mode A (IEC 1107) --> Cable colors black / red, polarity independent

Medium	Water
Absolute meter reading	123654 m ³
Serial number	43215678
Meter size	DN 50

M-Bus: EN 13757 --> Cable colors black / red, polarity independent

ECO: EN 13757-3 --> Cable colors black / green / red, note polarity

Example of use

Wireless read-out

Meter with GWFcoder® register is read out automatically by radio using a mobile infrastructure (for example radio module RCM® and MEx).

