



Installation instructions

RCM[®]-H200 split (Radio module) and/or connecting modules
Installation for BGZcoder[®] MP or BGZcoder[®] MP AE5

Always follow the steps below when installing:

1. Remove cover plate from meter register (Fig. 1). Use a crosshead screwdriver (size PH 1) to break through the seal and then remove the screw.
2. Carefully unpack the connecting module, the M3x12 round-head screw and the black sealing cap (both inserted at the back) as well as the O-ring (inserted behind the protective cover). A second sealing cap is provided as a spare. Remove the protective cover from the connecting module (Fig. 2). Remove the round-head screw and sealing cap carefully from the back.
3. Undo the O-Ring and lead it over the cable (make sure there is a 27 mm \pm 2 mm space between the O-ring and the end of the insulation).
Note: The external cable diameter should be a max. 4,2 mm. Protection class IP54 is guaranteed only if the O-ring supplied is used and there is a minimum 3,6 mm external cable diameter.
4. Position the ends of the wires under the screw terminals and screw tight. The polarity of the connections is not important using the connecting modules ACM 5.5 SCR and ACM 5.2 M-BUS.
Note: When connecting an RCM[®]-H200 split radio module, it is essential to use connecting module ACM 5.1 ECO. In this case the polarity in accordance with Fig. 3 as well as the connecting sequence (green wire first) must be observed.
Make sure the cable is routed properly (Fig. 4) and the O-Ring is correctly positioned (Fig. 4) so it cannot be pulled out.
5. Place cover plate in position on connecting module. Then mount it carefully on the meter register and fix with M3x12 round-head screw (Fig. 5)
Note: To avoid damaging the 4-pin plug on the meter register, do not use great force when fitting the module.
6. Installation methods RCM[®]-H200:
 - a) Wall installation
Mark the position for the two holes and attach the wall bracket using the supplied wall plugs and screws. Insert the radio module until it engages on the mounted wall bracket (Fig. 6).
 - b) Pipe installation
Use cable ties to install the wall bracket at the desired position. Insert the radio module until it engages on the mounted wall bracket (Fig. 6).
7. Carry out a test read-out.
Note: If the test reading is unsuccessful, remove the entire connecting module and mount it again (not relevant for RCM[®]-H200).
8. Cover head of screw with black cap to prevent tampering (Fig. 7)



Fig. 1

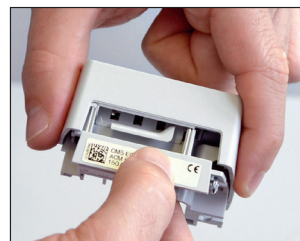
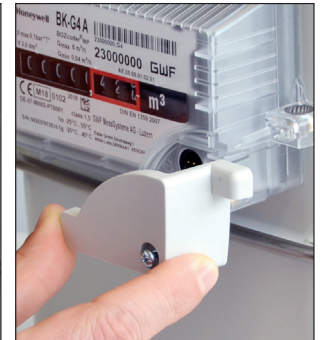


Fig. 2

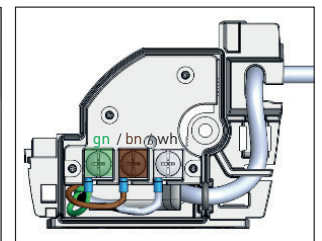


Fig. 3

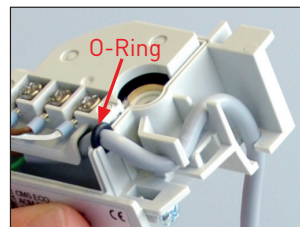


Fig. 4



Fig. 5

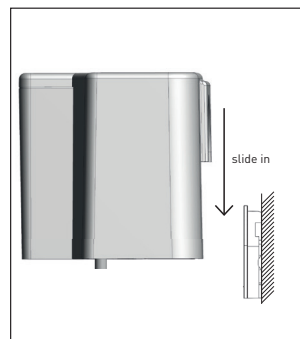


Fig. 6

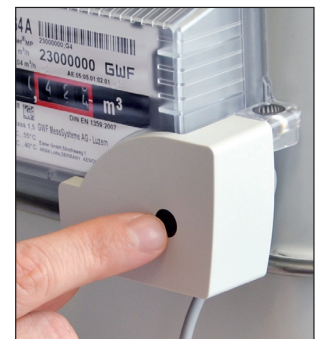


Fig. 7